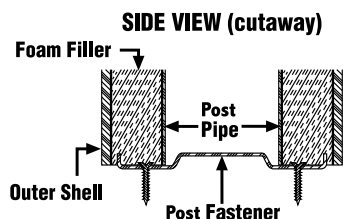


DIXIE SYNTHETIC POSTS
Colonial and Chamfered

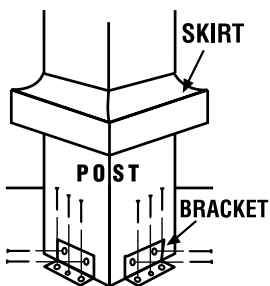
Tools Required For Installation:



STANDARD FASTENER INSTALLATION



OPTIONAL FASTENING METHOD USING POST FASTENING KIT



A. SPECIAL NOTES & EXCEPTIONS

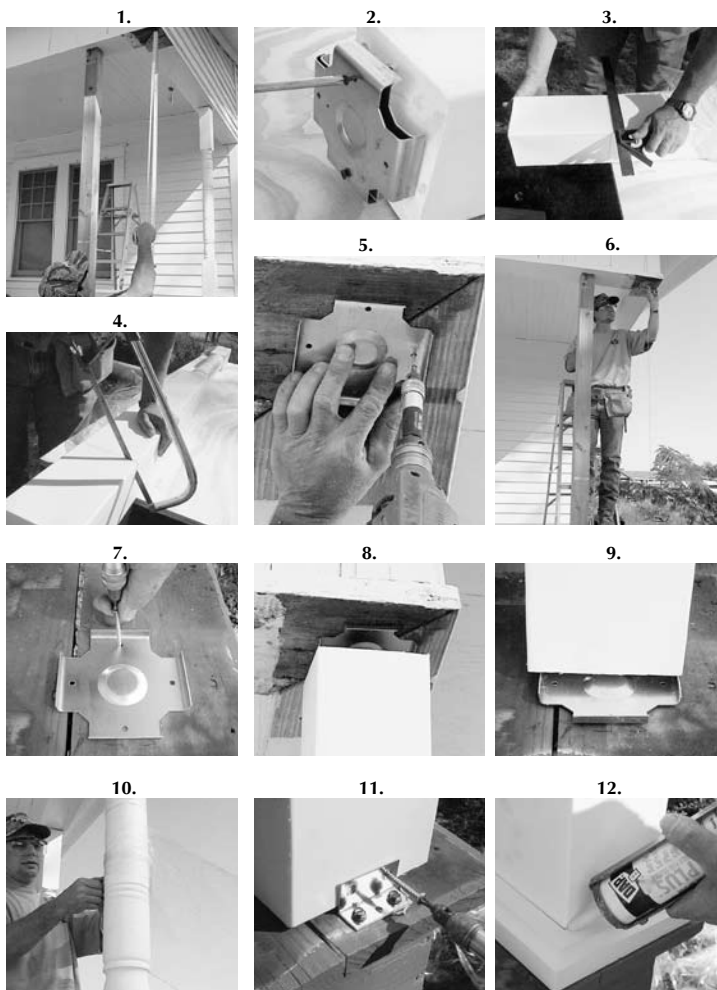
• Hand Rail Installation Tips:

- Check your local building codes for minimum rail heights for hand rails.
- Ensure that the bottom square portion of the post will accommodate the rail height. Hand rail must be attached to "square" portion of the Post.
- Pre-drill holes through both the post and structural steel pipe prior to attaching hand rail. When attaching hand rail to the post, screws must penetrate interior structural steel pipe.

B. PAINTING INSTRUCTIONS

Posts are made from a low maintenance white polyethylene that is designed to be left unpainted. If painting is desired, follow paint manufacturer's recommendations for painting polyethylene surfaces. Do not paint using dark colors. Dark colors are considered any color that falls within the L value of 56 to 0. "L" is a measure of lightness of an object and ranges from 0 (black) to 100 (white).

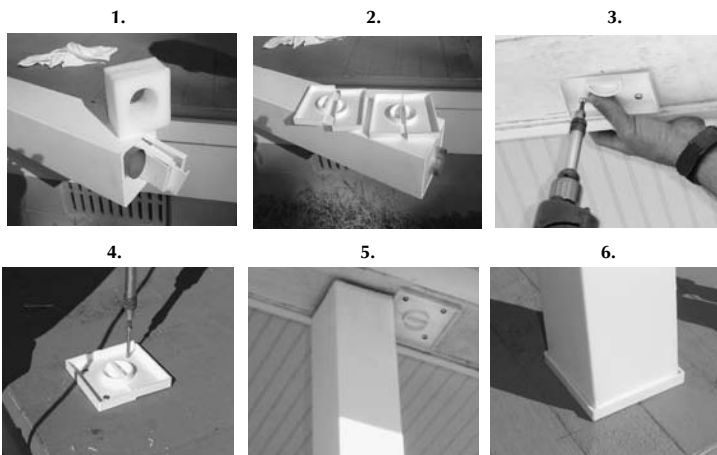
COLONIAL AND CHAMFERED POST INSTALLATION



C. COLONIAL AND CHAMFERED SYNTHETIC POST INSTALLATION INSTRUCTIONS

1. Measure opening where post will be installed.
2. Remove fastening plates from bottom of post. Trim top of post leaving the pipe flush with the outer shell.
3. If using handrail, check local building codes for minimum rail height. Decide how much is to be trimmed from each end of the Post. Top and bottom mounting plates are 1/4" thick. Mark post 1/4" shorter than total opening.
4. Using a hacksaw, trim the post at top and bottom.
5. Fasten one plate, edges down, to the beam above.
6. Using a plumb tool, find and mark bottom position on floor.
7. Fasten the other plate, edges up, to the floor.
8. Position top of post directly under the top fastening plate.
9. Position bottom of post over bottom fastening plate.
10. Check post for level and remove temporary support.
11. **OPTIONAL FASTENING METHOD (SOLD SEPARATELY).** Follow directions above except slide skirt over post prior to positioning. Attach corner irons to post and floor with supplied screws.
12. Slide skirt into position and caulk seam.

SQUARE POST INSTALLATION



D. SQUARE SYNTHETIC POST INSTALLATION INSTRUCTIONS

1. Remove foam block insert from bottom. Retrieve fastening pieces.
2. Post plates come in two pieces that are placed together to form one bracket.
3. Fasten one plate (two halves), edges down, to the beam above. Using a plumb tool, find and mark bottom position on floor.
4. Fasten the other plate (two halves), edges up, to the floor.
5. Position top of post directly under the top fastening plate.
6. Position bottom of post over bottom fastening plate.

Warranty is void if installation instructions are not followed.

DIXIE SYNTHETIC LAMP POSTS

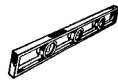
Tools Required For Installation:



Post Hole Digger



Shovel



Level



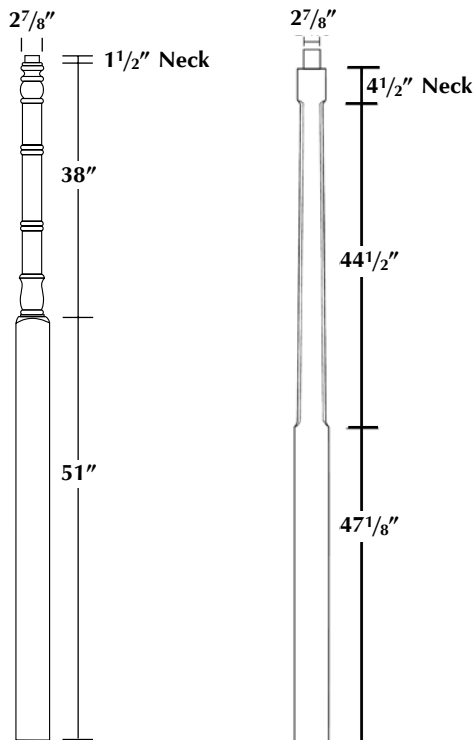
Personal Protective Equipment

A. SPECIAL NOTES & EXCEPTIONS

- Galvanized pipe in center of lamp post allows for easy electrical feed and fixture connection.
- Light fixture and wiring not included.

B. PAINTING INSTRUCTIONS

Dixie Lamp Posts are made from a low maintenance white polyethylene that is designed to be left unpainted. If painting is desired, follow paint manufacturer's recommendations for painting polyethylene surface. Do not paint using dark colors. Dark colors are considered any color that falls within the L value of 56 and 0. "L" is a measure of lightness of an object and ranges from 0 (black) to 100 (white).

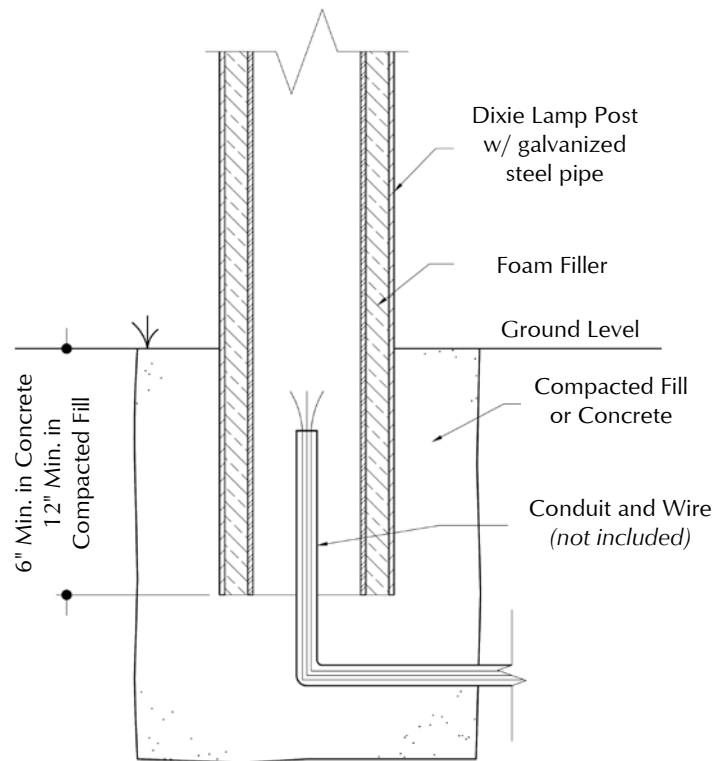


Dixie Lamp Post

Chamfered Lamp Post

C. DIXIE LAMP POST INSTALLATION INSTRUCTIONS

- Using posthole digger, dig hole in desired location (Refer to local building codes for post/footing depth).
- Pre-run electrical wiring through steel pipe inside of post. Make sure wiring runs entire length of post with enough slack for fixture installation.
- Set the post in hole and level. Fill remaining hole with compacted dirt or concrete.
- Have a certified electrician install and connect all wiring for the lamp fixture.



TYPICAL FOOTING SECTION FOR LAMP POST

Warranty is void if installation instructions are not followed.